

PRESS INFORMATION

Contact: Eleanor Sachs
Phone: 781.775.6039
eleanor@schoellerusa.com
www.schoeller-textiles.com

Overview: eschler®, a schoeller® brand, 2018 Summer Knitted Fabric Collection

New structures, super-light qualities and exciting functions

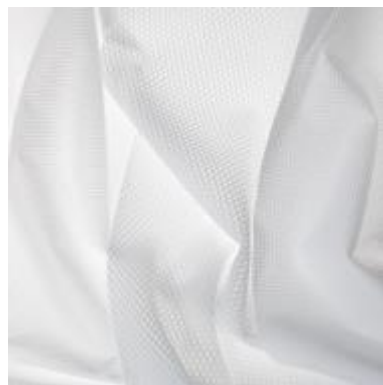
August 2016: The knitted fabrics from eschler®, a schoeller® brand, continue to make an impact in the category around function and unique looks. Developed in Switzerland by the leading woven and knitted fabrics textile company and produced on advanced machinery under ecological conditions, the collection features new micro structures, ultrafine E40 or E50 gauge warp-knitted articles, concealed reflective prints and highly abrasion-proof ceramic prints.

MICRO STRUCTURES



The core theme of the fabrics for Bike Summer Collection 2018 comprises elastic, **e1** warp-knitted articles with new micro structures in various gauges. Among the main highlights are structured bike shirt qualities in white, suitable for printing. New introductions include a semi-transparent 3D bubble look, fine checks, or an attractive mesh structure.

LIGHTNESS AND ENERGEAR



Also in the collection are the ultrafine yet opaque E40 and E50 gauge warp-knitted articles. In addition to feeling soft and light against the skin, the **coldblack®** UV and heat protection, and the **active>silver™** freshness finish provide additional functions. An eyelet look provides an outstanding

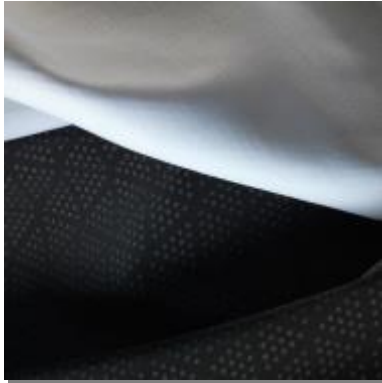
feature for bodysuits. In the **e1** with the performance-promoting **energear™** technology, a diamond pattern made of carbon fibers flashes through from the reverse, further enhancing the knitted fabrics with an antistatic effect.



PRESS INFORMATION

Contact: Eleanor Sachs
Phone: 781.775.6039
eleanor@schoellerusa.com
www.schoeller-textiles.com

CERAMIC COATING

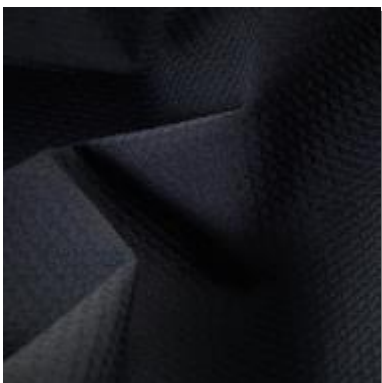


The ceramic coating famous for its high-abrasion resistance is a special area of expertise at eschler®, a schoeller® brand. Thanks to an innovative technology with fine ceramic dots in combination with various designs, this robust coating can also be applied to elastic **e1** warp-knitted articles and coating media for laminates. A brand new addition to the ceramic coating collection is a special triangular design or the invisible application on white knitted fabric for printing. The various polyester qualities for transfer printing or the polyamide qualities for garment dyeing remain highly elastic. Furthermore, the coating is laundry-resistant and does not change the feel or air permeability of the fabrics.

DRY IN A FLASH



The **e1 Flash fabrics** with new looks in eyelet structure, bicolor checkerboard pattern or a check design are very opaque compression textiles with outstanding recoil. Thanks to a robust, abrasion-proof polyamide face and a polyester reverse ensure outstanding perspiration



transport when racing or cycling. The **Flash** by schoeller® materials is a group of highly-elastic knitted textiles available in various colors with best-in-class moisture management and quick drying properties. A further speciality is the Warm Fabrics with the xtracool fiber for bike pants or bib shorts. In black or in color, the **e1** quality with honeycomb structure impresses with temperature-regulated properties.

