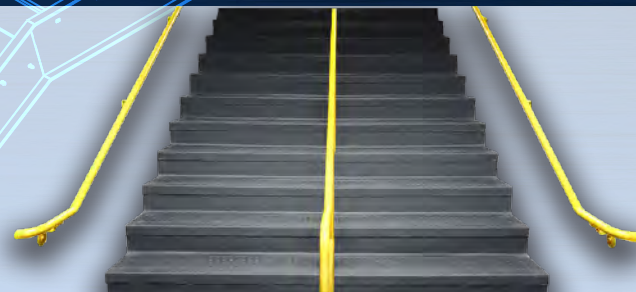




# COMMERCIAL PRODUCT LINE

Continuously Elevating Standards



LAPEYRE  STAIR

 [www.lapeyrestair.com](http://www.lapeyrestair.com)

## Leave the stairs to the experts

Lapeyre Stair is your complete outsource solution for stairs with in-house resources and over three decades of stair-specific experience

- ✓ Expert field account management provides face-to-face project coordination
- ✓ Experienced estimators help you bid on more jobs so you can win more jobs
- ✓ Dedicated project management handles each phase of your project from beginning to end
- ✓ In-house designers and detailers provide 3D modeling and BIM coordination
- ✓ PE stamps and calculations for all 50 states
- ✓ Quality fabrication by AWS-certified welders
- ✓ Two state-of-the-art production facilities located in New Orleans, Louisiana



**ELEVATED STANDARDS** Lapeyre Stair also manufactures cost-effective, custom-built standard stairs and alternating tread stairs for industrial applications.

# Steel stairs for commercial applications

All of Lapeyre Stair's code-compliant, commercial stair products consist of pre-engineered landing, stringer, tread, and rail components that are easily customized based on specific project requirements.

## Benefits

- ✓ Value-engineered systems
- ✓ Efficient project quoting
- ✓ Shorter design lead times
- ✓ Guaranteed on-time delivery
- ✓ Code-compliant
- ✓ Quick and easy installation
- ✓ Reduced installation errors
- ✓ High-rise expertise
- ✓ Volume discounts

## Products

- 4** Value-engineered solutions  
Enhanced performance and improved value
- 5** Standard product line  
Cost-effective options with guaranteed lead times
- 6** Steel welded stairs  
IBC- and ADA-compliant egress stairs
- 8** Z-Stack Stair System  
Stair system for modular construction
- 10** Guaranteed Fabrication Lead Times  
On site, on site, every time



# Value-engineered solutions

Lapeyre Stair is inspired and influenced by each customer and every project. Their approach to product development is to deliver high quality products that provide their customers with the best value possible.

## Quiet Grip™ Tread System

Cost-effective, non-slip tread system with sound-absorbing properties

### ✓ Ideal for applications where noise reduction is a priority

- Hotels
- Condos
- Offices
- Dormitories
- Apartments
- Hospitals

### ✓ Safety-compliant, non-slip surface

An abrasive, polyurethane coating provides long-term durability and a non-slip walking surface that complies with ADA, OSHA, IBC, and NFPA requirements.

### ✓ Sound-dampening properties

The coating provides sound-absorbing benefits to better accommodate the needs of acoustically-demanding environments.

### ✓ Lower costs, faster installation

The Quiet Grip Tread System is applied to standard metal stairs, eliminating material costs and additional labor requirements associated with concrete-pan treads.

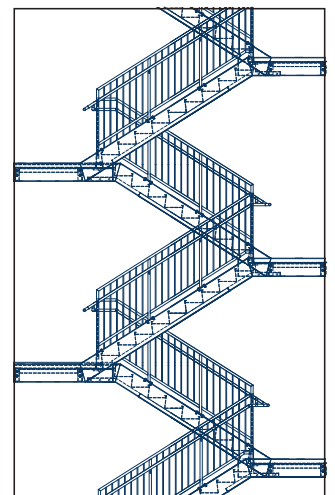
Meets ADA, OSHA, IBC, and NFPA requirements for non-slip surfaces.

## Scalable cost savings

Lapeyre Stair offers a value-engineered stair system that uses lighter weight materials to provide greater flexibility in managing project costs. This approach has the greatest impact on large-scale projects with standard egress layouts. The end result is a lower cost, code-compliant stair system that passes all required calculations. Additional benefits include lower overall shipping costs and shorter engineering lead times.



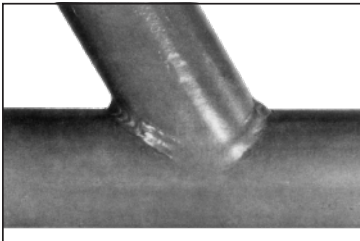
**ELEVATED STANDARDS** Lowered costs do not mean less service. Every product that Lapeyre Stair manufactures comes with the same, unwavering commitment to high-quality customer service.



# Standard product options

Projects that choose Lapeyre Stair’s value-engineered standard product options cost up to 20% less than projects with custom options and come with a money-back guarantee on fabrication lead times.

## STANDARD WELD TYPE



NOMMA Type 3

## STANDARD STRINGER OPTIONS



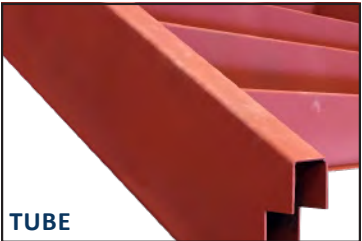
PLATE

¼" to ½" thick flat plate



CHANNEL

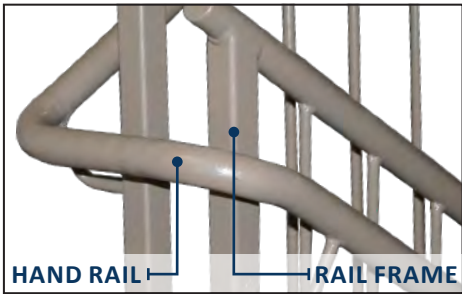
MC12x10.6 or C12x20.7



TUBE

12" x 2" x ¼" HSS tube

## STANDARD RAIL OPTIONS

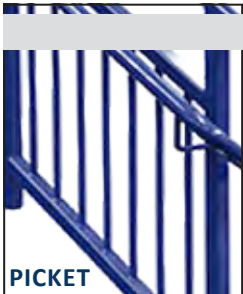


HAND RAIL

RAIL FRAME

1½" OD 13 gauge tube  
or 1½" schedule 40 pipe

1½" tube or 1¼" schedule 40 pipe



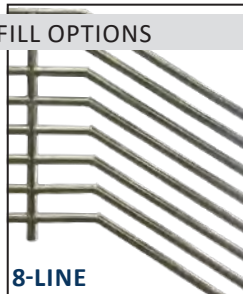
PICKET

½ to ¾" square or round tube pickets



PANEL

2" x 2" mesh panels, U-channel frame



8-LINE

1½" schedule 40 pipe

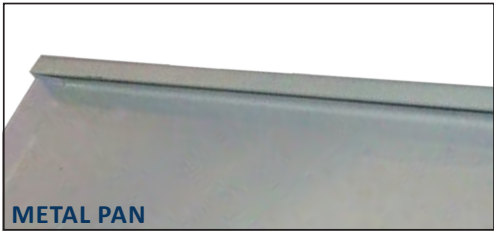


3-LINE

1¼" schedule 40 pipe

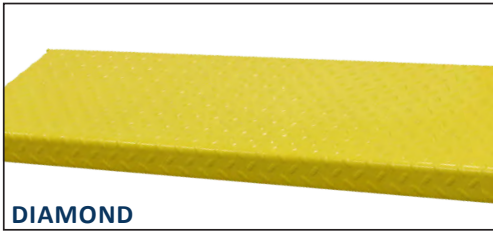
## STANDARD INFILL OPTIONS

## STANDARD TREAD OPTIONS



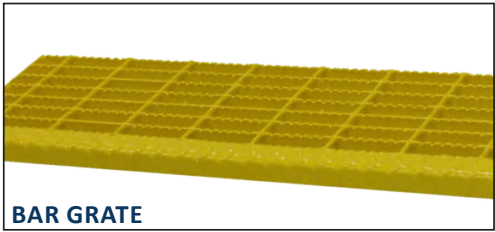
METAL PAN

14 gauge to ¼" thick plate



DIAMOND

11 gauge to ¼" thick plate



BAR GRATE

19w4 with checker plate nosing

## STANDARD FINISH OPTIONS



POWDER COAT

Red oxide primer



SHOP PRIMED

Red oxide or MPI#79



GALVANIZED

Hot dip



CAD assembly details for standard product line options are available at [www.lapeyrestair.com](http://www.lapeyrestair.com).

# Steel Welded Stairs

## Code-compliant egress stairs

Steel welded stairs from Lapeyre Stair meet IBC and ADA requirements for egress stairs in multi-story buildings. Lapeyre Stair's experienced estimating department provides comprehensive pricing based on individual project specifications.

## Expert design and detailing

The engineering department at Lapeyre Stair designs every stair they manufacture in Advance Steel. Each project is fully detailed and integrated into the building to ensure the finished product is code-compliant, passes calculations, and is a perfect fit when it arrives at the job site.

## Guaranteed fabrication lead times

Lapeyre Stair operates two, state-of-art production facilities that utilize CNC machinery to fabricate high-quality, precision-fit stairs. Their money-back guarantee on fabrication lead times ensures projects are delivered on site, on time, every time.

## Dedicated project support

Every commercial stair project is managed by one of Lapeyre Stair's in-house project managers. They coordinate all of the involved efforts and provide a single point-of-contact for every step of the process from design to delivery.



**ELEVATED STANDARDS** CNC manufacturing and proprietary tread fixtures reduce field alignment issues, improve efficiency of installation, and provide a more precise finished product.



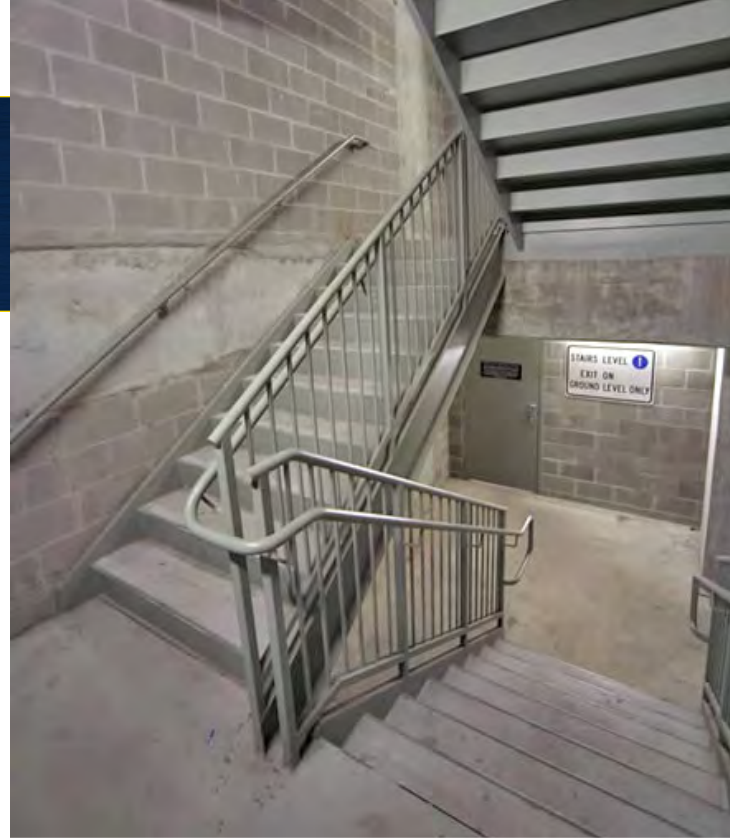


**ELEVATED STANDARDS** Guaranteed fabrication lead times mean each job arrives on site, on time, every time.



## Complete stair solution for any structure that requires egress stairs

- ✓ Hotels
- ✓ Condos
- ✓ Apartment buildings
- ✓ Office and mixed-use
- ✓ Mid- and high-rise buildings
- ✓ Hospitals
- ✓ Parking garages
- ✓ Multi-level self storage facilities
- ✓ Senior housing
- ✓ Student housing



Take the next step at [www.lapeyrestair.com](http://www.lapeyrestair.com)

- ✓ BIM model downloads
- ✓ CAD details and product specs
- ✓ Standard Product Line details
- ✓ Product photo gallery
- ✓ Sample pricing
- ✓ Quote request form





**COMPATIBLE WITH  
MOST TYPES OF  
CONSTRUCTION**

- ✓ Structural Steel
- ✓ Light Gauge Steel
- ✓ Wood    ✓ Concrete

# Z-Stack Stair System

Prefabricated stair system designed for modular construction

- ✓ Quick and simple installation
- ✓ Minimal crane picks and limited field connections
- ✓ Reduced on-site labor and equipment requirements
- ✓ Highly tolerant of field condition variances

## Z-Stack Stair System

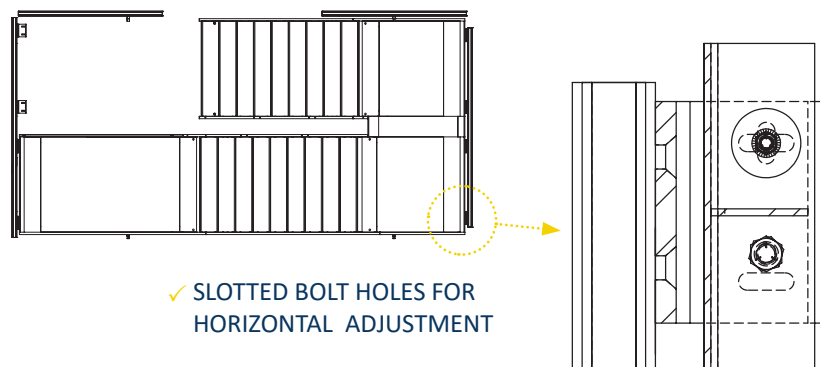
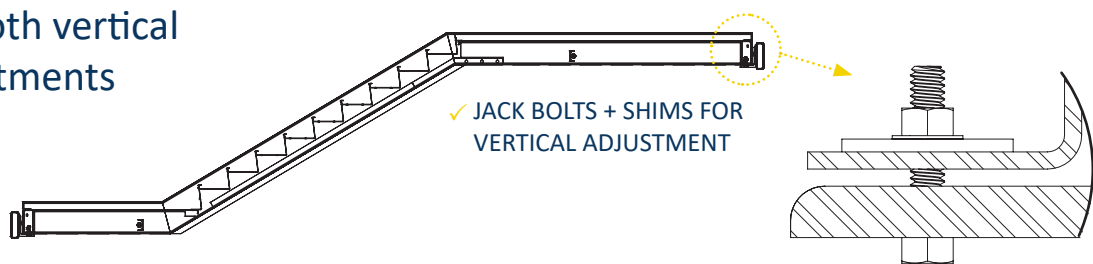
- ✓ Quick and simple installation
- ✓ Installation time: **ONE HOUR**
- ✓ Installed by light gauge steel crew
- ✓ Single stair and landing unit
- ✓ Two crane picks per floor
- ✓ 12 bolted connections per floor

vs

## Traditional Pre-Fab Stairs

- ⊗ Labor-intensive installation
- ⊗ Installation time: **6+ HOURS**
- ⊗ Requires welding labor and equipment
- ⊗ Separate stair and landing
- ⊗ Four crane picks per floor
- ⊗ 10+ welds and 16+ bolts per floor

Designed to allow both vertical and horizontal adjustments during installation



Quick and simple installation takes less than one hour per floor

- 1 Set and align
- 2 Make adjustments
- 3 Tighten angle bolts



**3:18 PM** *Start Time*

Structure ready for install; stairs and equipment on site.



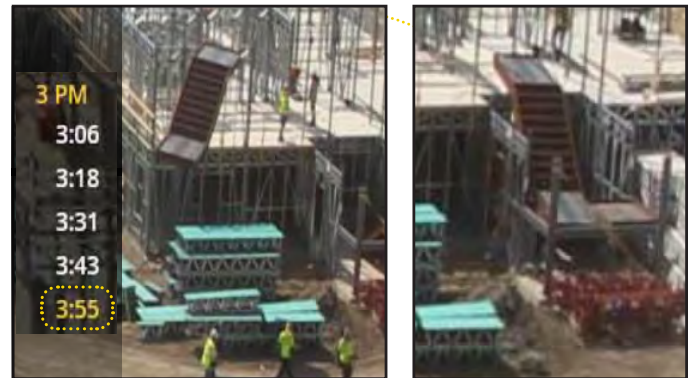
**3:31 PM** *+13 Minutes*

First flight and landing picked and in place to set.



**3:43 PM** *+25 Minutes*

First flight and landing set.



**3:55 PM** *+37 Minutes*

Second flight and landing picked and in place to set.



# Money-back guarantee on fabrication lead times



## The Lapeyre Stair Guarantee<sup>1</sup>

Once final drawings are mutually approved:

- ✓ PRIMED orders ship within 20 working days
- ✓ GALVANIZED orders ship within 30 working days

**Or, a credit of \$500 per day of delay will be issued<sup>3</sup>**

			FABRICATION TIME IN WORKING DAYS		
APPLICABLE LEAD TIME <sup>4</sup>			PRICE <sup>2</sup>	STANDARD	EXPEDITED <sup>5</sup>
PRIMED ORDERS	GUARANTEED	UP TO \$50k		20	15
	STANDARD	\$50k – \$75k		25	20
	STANDARD	\$75k – \$100k		30	25
	SEQUENCED	\$100k and up		Sequenced shipments based on above lead times <sup>6</sup>	
GALVANIZED ORDERS	GUARANTEED	UP TO \$50k		30	25
	STANDARD	\$50k – \$75k		35	30
	STANDARD	\$75k – \$100k		40	35
	SEQUENCED	\$100k and up		Sequenced shipments based on above lead times <sup>6</sup>	

### Guaranteed, standard, and sequenced lead times apply to standard orders only.

Lead times for custom orders are determined on a case-by-case basis.


- 1 The Lapeyre Stair Guarantee does not apply under the following conditions: (a) You make any changes to your order (Note: change orders must be submitted in writing); (b) You request a cessation or delay of work on your product or take any actions that result in a cessation or delay of work on your product (Note: requests of this nature must be submitted in writing); (c) Lapeyre Stair is unable to complete the order on time due to extraordinary circumstances outside of Lapeyre Stair’s reasonable control. This includes, but is not limited to, weather events (e.g. hurricanes or tornadoes), fire, or acts of terrorism.
- 2 Excluding shipping costs.
- 3 Up to a maximum of 20% of the total purchase price (excluding shipping costs.)
- 4 Lead time is working days and excludes holidays/weekends.
- 5 Expedited fabrication fee is 10% of total order (excluding shipping costs.)
- 6 For orders of \$100k and up, a custom fabrication and delivery schedule will be determined based on project needs.



# LAPEYRE STAIR

 [lapeyrestair.com](http://lapeyrestair.com)

 [Ls.sales@lapeyrestair.com](mailto:Ls.sales@lapeyrestair.com)

 800-535-7631  
504-733-6009