



MANNI **SIPRE**

AISC
CERTIFIED
FABRICATOR

(914) 291-3962 | mannigroup.com

WE'RE YOUR
**RELIABLE,
LOW-COST
GLOBAL
PARTNER**
FOR FABRICATION AND
STRUCTURAL STEEL SUPPLY



The Low-Cost,
High-Quality
Option



75 Years of
Experience in
Structural Steel



Serving Clients
Worldwide from
Southern Europe



AISC and
Internationally
Certified

GET IN TOUCH: +1 (914) 291-3962 | lino.tosoni@manninggroup.com

SOUTHERN EUROPE'S

LEADER IN STEEL

CAN BE YOUR COST-EFFECTIVE, STRATEGIC EDGE IN THE U.S. MARKET

Manni Sipre is one of the largest steel service centers and structural steel fabrication companies in southern Europe. The company's history in engineering and fabricating steel structures worldwide includes key projects in the U.S.

75 YEARS SERVING THE STEEL FABRICATION INDUSTRY

Manni Sipre has engineered and fabricated steel structures for multiple sectors including buildings, bridges, petrochemical, processing, sports venues and boiler and pressure vessel projects.

A worldwide competitor, shipping costs with Manni Sipre are surprisingly more competitive than domestic trucking costs for US-based projects.

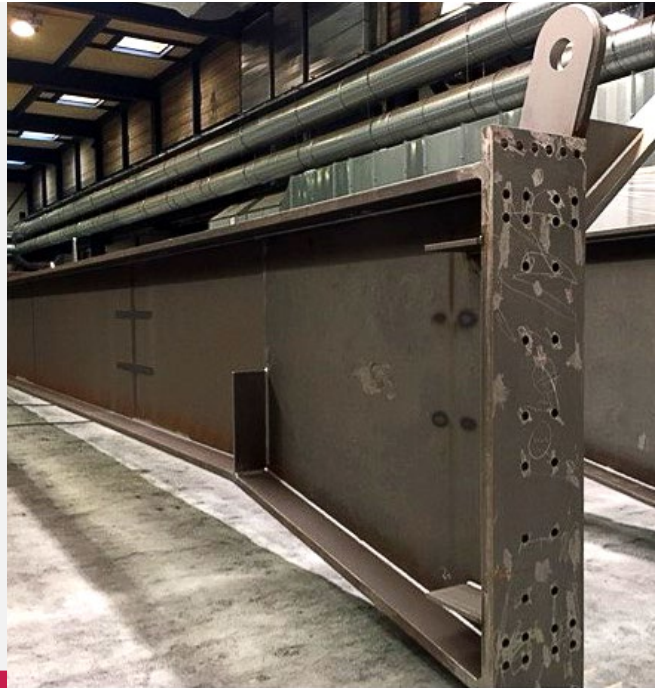
- Ordering is easy and material documentation is provided in a format that can be seamlessly integrated into your project documentation
- Mill size plates and shapes with full traceability as required by project for compliance with ASME, AWS, AISC and AASHTO
- Material compliance to ASTM specifications or as required by your project
- Huge 280,000-ton inventory
- Manni Sipre is competitive regardless of project size



FEATURED PRODUCT

Welded Or Fully Finished Large Plate Girders I-Girder | Tub Girder

May be ordered cut, drilled and assembly welded only. May also be ordered with details fabricated and attached per your prints.



METAL PROCESSING

We offer a range of services from precision drilling and plasma cutting to advanced processing, sandblasting and more.

- CNC precision drilling
- Flame cutting up to 20 inches thick
- Precision laser plate cutting beyond 3/4 inches thick
- Plasma cutting beyond 1 inches to precise shapes from your drawings or electronic files
- Wide flange and other structural shapes cut, drilled, coped and piece marked to your project's bill of materials
- Advanced processing including automated initial weld joint preparation and initial joining to be completed by your subcontract fabrication team
- Shearing and press brake forming
- Sandblasting



BY THE NUMBERS

350,000

TONS PER YEAR OF
PROCESSED STEEL

10,000

CUSTOMERS
WORLDWIDE

8

PRODUCTION
FACILITIES

280,000

TONS
OF INVENTORY

1 MILLION

SQUARE FEET OF
PRODUCT IN-HOUSE
AND UNDER ROOF



MANNI SIPRE

**GET IN
TOUCH**

HEADQUARTERS:

Via A. Righi, 7 I - 37135
VERONA, ITALY
Tel: 0039 045 8088911
Fax 0039 045 8204829

USA

Offices in NYC and Houston TX.
Lino M Tosoni
+1 (914) 291-3962
lino.tosoni@mannigroup.com