



2019

RECOIL



Blade: 3.00" 9Cr18Mov, Stonewash / Handles: Steel, Black Oxide /
Back Spacer: 6061T6 AL / Pocket Clip: Bent Steel

RECOIL is a rugged Everyday Carry Knife. Easy to deploy with an oversized thumb stud, it is a workhorse in the field or the workplace. With a unique shape, it is extremely ergonomic and is engineered for any cutting task without having to give up comfort. This EDC knife can be easily deployed even with a gloved hand.

The Recoil is a robust EDC that smoothly opens thanks to its bearing driven pivot system. Light and easy to carry, Recoil is a necessity.



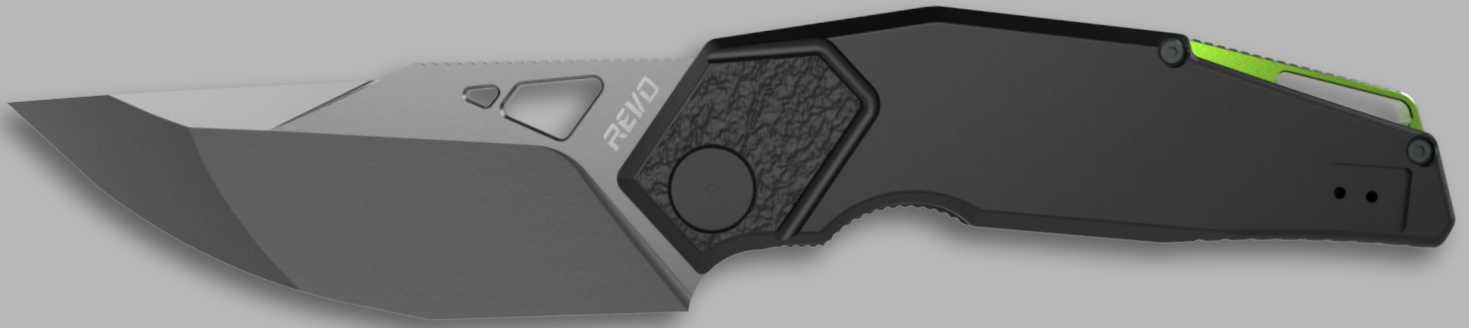
Other Finishes/SKUs *2019:

Blade: Stone Wash
Handles: Abrasive Blast Back
Spacer: Red Anodize

Blade: Black Wash
Handles: Black Ti Nitride
Spacer: Green Anodize

Blade: Stone Wash
Handles: Abrasive Blast Back
Spacer: Green Anodize

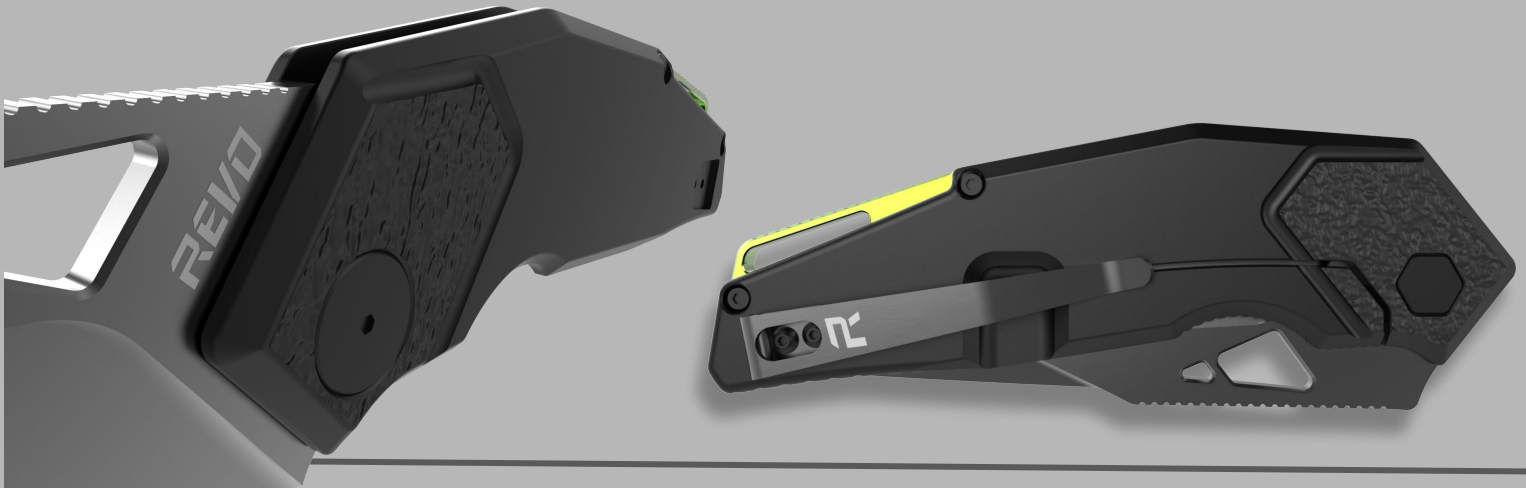
BERSERK



**Blade: 3.65" 9Cr18Mov, Blackwash / Handles: Steel, Black Oxide /
Back Spacer: 6061T6 AL, Anodized / Pocket Clip: Bent Steel**

Engineered for maximum value, the **BERSERK** has a unique shape and opening dynamics that redefine what an EDC knife should be. Ready for any task, it deploys smoothly with a bearing driven pivot system. The BERSERK has a robust build and design that sets it apart from many other knives. It combines durability with functionality and can be used for any cutting task large or small.

With a reversible pocket clip, the BERSERK is a knife for any occasion and can handle anything you throw at it.



Other Finishes/SKUs:

Blade: Stone Wash
Handles: Abrasive Blast Back
Spacer: Green Anodize
Pocket Clip: Stone Wash
Hardware: Black Oxide

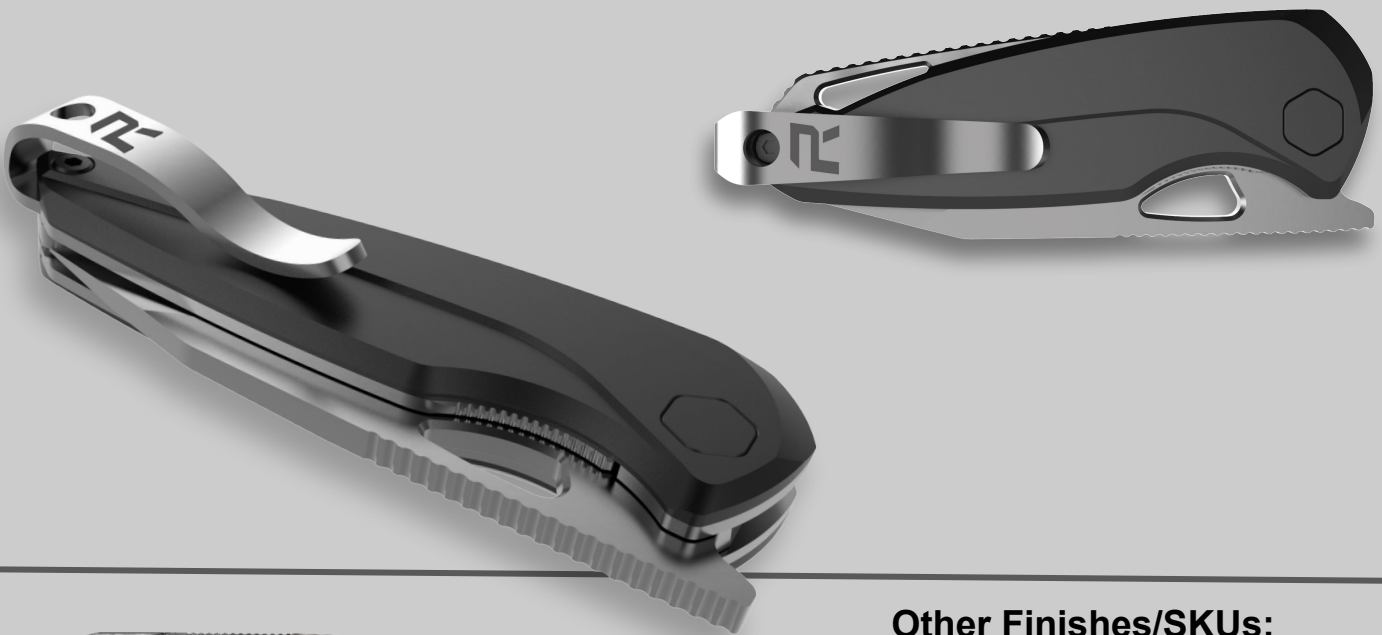
VIPERA



Blade: 2.00" 9Cr18Mov, Stonewash / Handles: Steel, Black Oxide / Back Spacer: 6061T6 AL, Anodized / Pocket Clip: Deep Carry, Bent Steel

VIPERA is a front flipping companion you'll want with you every day. It is a small EDC that is easily accessible with jimping along the side to allow for better grip.

The ergonomic VIPERA opens quickly due to its bearing driven pivot system. It may be small but it packs durability and functionality into a small package.



Other Finishes/SKUs:

Blade: Stone Wash
Handles: Abrasive Blast Back
Spacer: Red Anodize

Blade: Black Wash
Handles: Black Ti Nitride
Spacer: Green Anodize

Blade: Stone Wash
Handles: Abrasive Blast Back
Spacer: Green Anodize



WARDEN



Blade: 3.20" 9Cr13Mov, Stonewash / Handles: Steel liner G10 Scale / Back Spacer: 6061T6 AL, Barrel / Pocket Clip: Deep Carry, Bent Steel

The **Warden** was designed to make a minimalist footprint when carried, but offer a full-size knife experience when in use. Designed with a slim profile and lightweight in mind; the size won't be noticed when it's in the pocket, but the utility will shine when deployed for everyday tasks.

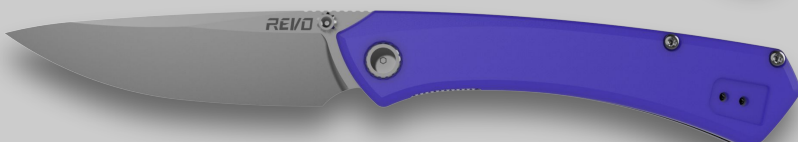
The Warden features a spring assisted opening mechanism for ease of blade deployment. Jimping is at the top of the spine for additional grip and control. Thumb stud is knurled/serrated for extra grip when opening and closing.



Other Finishes/SKUs:



Blade: Stone Wash
Handles: Black G10



Blade: Stone Wash
Handles: Blue G10



Blade: Stone Wash
Handles: Coyote Brown G10

NESS



Blade: 3.50" 9Cr13Mov, Stonewash / Handles: Steel liner G10 Scale / Back Spacer: AL, Barrel & Steel Lanyard / Clip: Deep Carry, Bent Steel

The **Ness** features a modern take on a traditional nessmuk blade style. The Ness blade profile is a full flat grind allowing for excellent slicing capacity. The deployment features a hidden flipper tab. The tab is used to deploy the blade easily and quickly, but once open hides behind the profile of the handle for a clean feel and look.

The handles feature a texture that provides grip and feedback and a finger groove for a additional comfort. At the end is a lanyard hole built into the spacer. The REVO Ness is truly an excellent all around performer!



Other Finishes/SKUs:

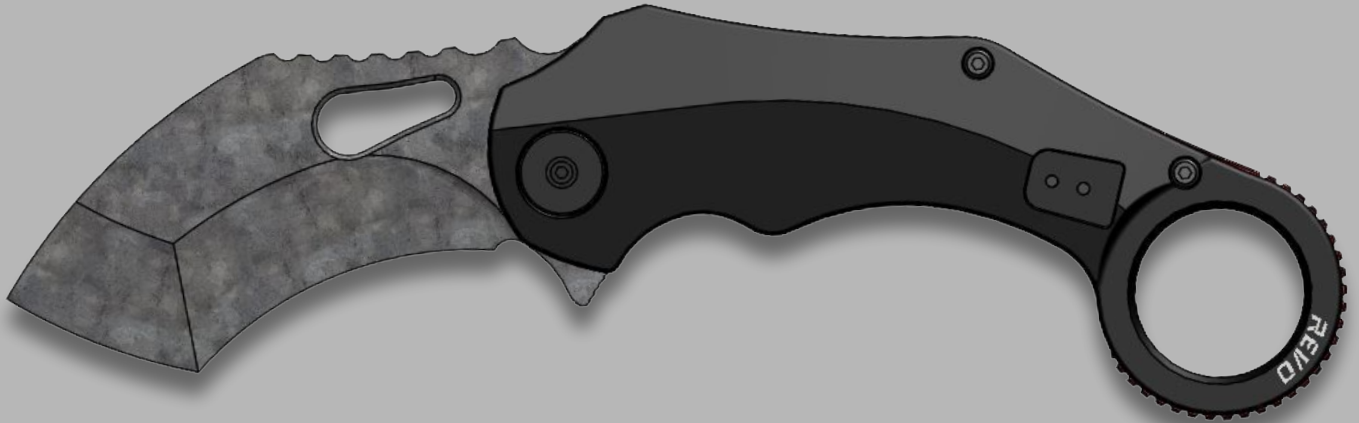
Blade: Stone Wash
Handles: Black G10

Blade: Stone Wash
Handles: Grey G10

Blade: Stone Wash
Handles: Flat Earth G10



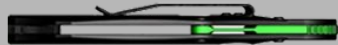
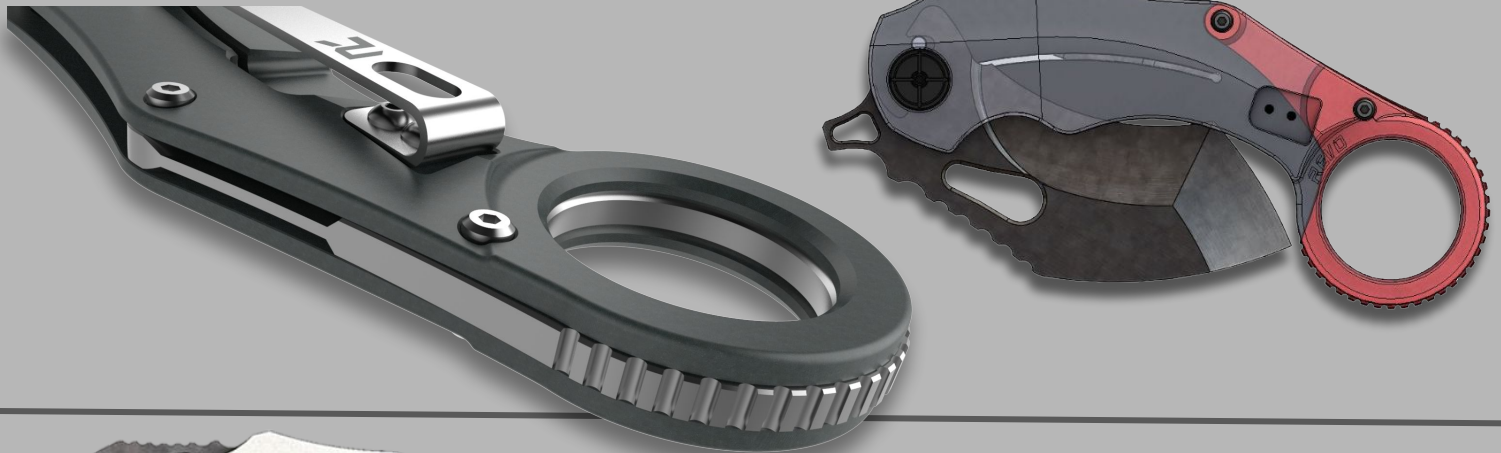
K9 - KARAMBIT



Blade: 2.89" 9Cr18Mov, Blackwash / Handles: Steel, Black Oxide / Back Spacer: 6061T6 AL, Anodized / Pocket Clip: Deep Carry, Bent Steel

The **K-9 Karambit** combines a reliable performance with value. Optimally made to perform as a self-defense tool, the knife was reviewed by retired Recon Marine Jeff Brown during the development phase to ensure its functionality and quality.

This karambit doubles as an EDC as it can handle folding knife tasks as well as self-defense. It is extremely multi-functional and offers precision, and efficiency. The pivot is bearing driven, allowing the knife to open smoothly. The pocket clip allows for multiple carry options. For those seeking a dynamic self defense carry or utility knife, the K-9 Karambit is the perfect fit.



Other Finishes/SKUs:

Blade: Stone Wash
Handles: Abrasive Blast Back
Spacer: Red Anodize

Blade: Black Wash
Handles: Black Ti Nitride
Spacer: Green Anodize

Blade: Stone Wash
Handles: Abrasive Blast Back
Spacer: Green Anodize

CONTACT US!

REVO is always available for questions and inquiries. We look forward to hearing from you and your team!

**REVO LLC
798 SWAN LAKE AVE.
SWANVILLE, ME 04916**

Ph: 207 323 1545 (Edward Anthonis / CEO)

info@revoknives.com / efa@revoknives.com



@revoknives



@revoknives

REVO